

Lewis Structures & VSEPR Practice

1. Write a reasonable Lewis structure for the following molecules or ions, showing formal charges where necessary, and predict the approximate bond angles around each central atom using the VSEPR method.

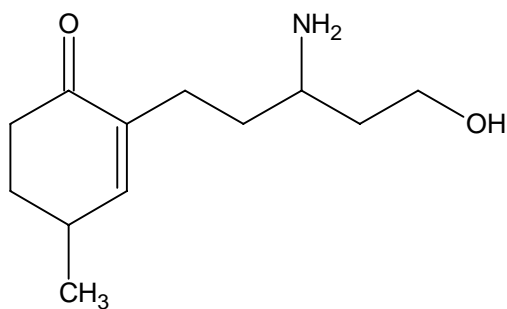
a. CH_3CO_2^- , acetate ion

b. $\text{CH}_3\text{CH}_2\text{NH}_3^+$

c. C_2H_2

d. SiH_4

2. Write the chemical formula for the structure below: _____



3. In the structure above, circle and label all the functional groups.