

Chemistry 201 Equipment Inventory

Find the following equipment and determine that it is in good condition:

Beakers

- 600 mL
- 400 mL
- 250 mL
- 100 mL
- 50 mL



Checked by:

Name _____

Name _____

Date _____

Station Number _____

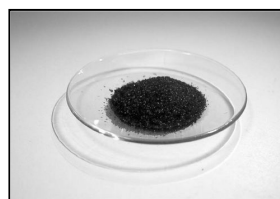
Chemistry Section _____

Erlenmeyer Flasks:

- 250 mL
- 125 mL

Glass Funnel

- medium



Watch Glasses:

- medium
- small

Graduated Cylinder

- 25 mL
- 50 mL

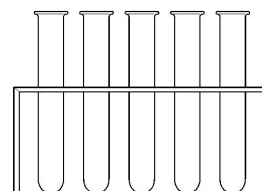


Evaporating Dish

- medium

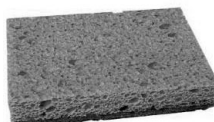
Test Tubes:

- two 8 inch
- eight 6 inch
- four 4 inch



Sponge

- one



Tongs

- one



Dropper:

- 2 small



Test tube Brush

- small



Test tube Holder

- small



Spatula

- small

Stirring Rod

- glass

